

ElastiFill



New Generation of Beauty





ElastiFill

New Generation of Beauty

ElastiFill is a revolutionary filler based on Poly-lactic acid that offers a safe, non-surgical solution to reduce the appearance of wrinkles, fine lines and hollowed cheeks.

ElastiFill is designed for administration either subcutaneously or into the upper dermal layer. The formulation consists of polylactide, a naturally-derived compound that, by targeting the molecular pathways of the cell, induces the production of new collagen molecules.





Due to ElastiFill injections, wrinkles are simultaneously filled, resulting in reorganization of cellular processes, leading to enhanced skin elasticity and firmness. This product exhibits homogeneity thanks to the ideal spherical shape of its constituent particles, which greatly facilitates the procedure.

Benefits



TIME

Revolutionary solution aimed at stimulating the production of its own collagen in cells, so the effect of the procedures lasts up to 24 months.

TECHNICS

Innovative filler gel based on ideal spherical particles that provides easy insertion and uniform distribution under the skin.

MATERIAL

Advanced filler synthesized from environmentally friendly, non-animal materials of high biocompatibility.

Utilization and Incorporation of ElastiFill



Volume	200mg
Dilution volume	Sterile distilled water 6~8cc(2 % Lidocaine 1cc)
Cannula	25~27G
Needle	25~30G



MAIN INGREDIENTS

PLA (Poly D,L-lactid)

CMC (Carboxymethyl cellulose)

COMPOSITION

200 mg/vial

NUMBER OF TREATMENT

1-3 Times

DURATION

18-24 Month

ElastiFill

Application



Facial Elasticity



Periocular Rhytids



Wrinkles around lips



Fine wrinkles on face



Body (Hip)



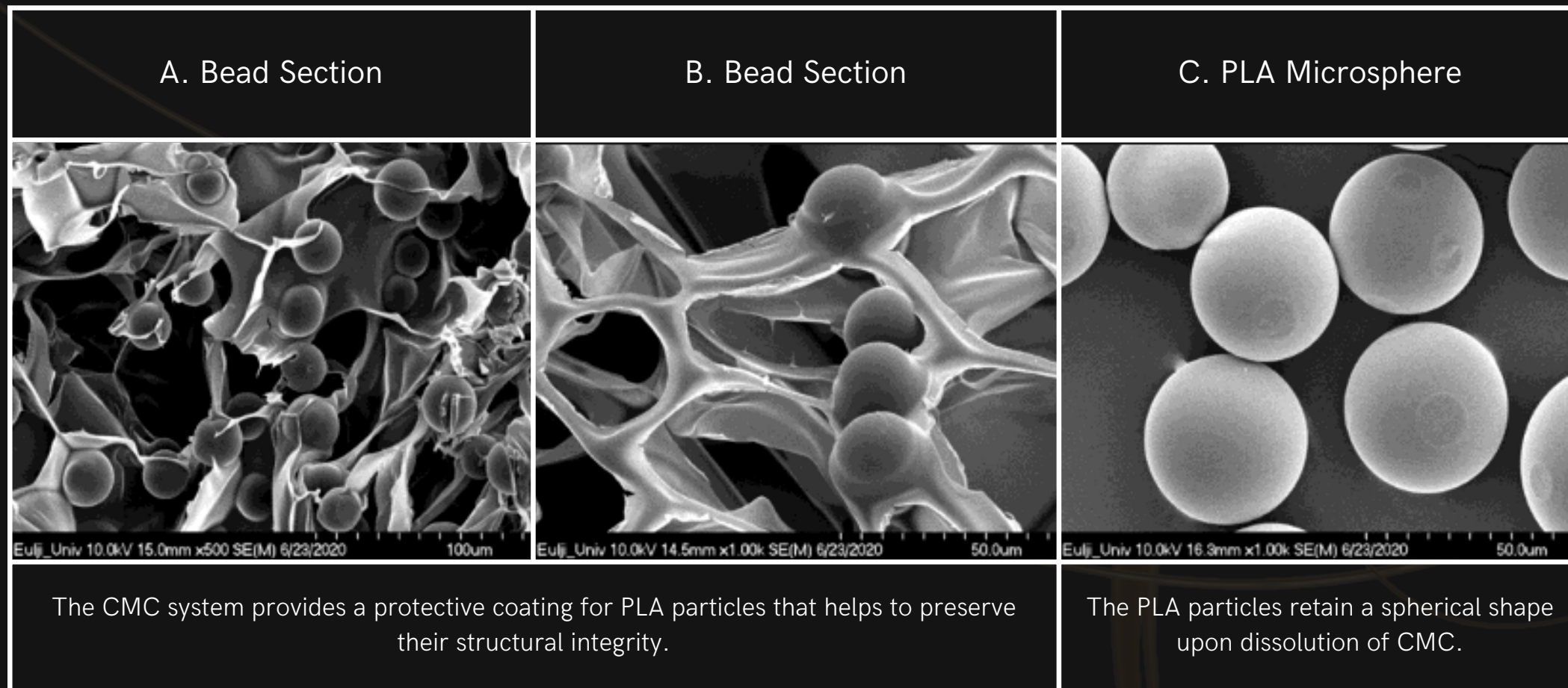
Rapid Disintegration Rate

30 min ▶▶ 60 min ▶▶ 90 min



Homologous Microsphere Technology

- HMT freeze-drying technology enables accelerated product solubility and shortened processing times.



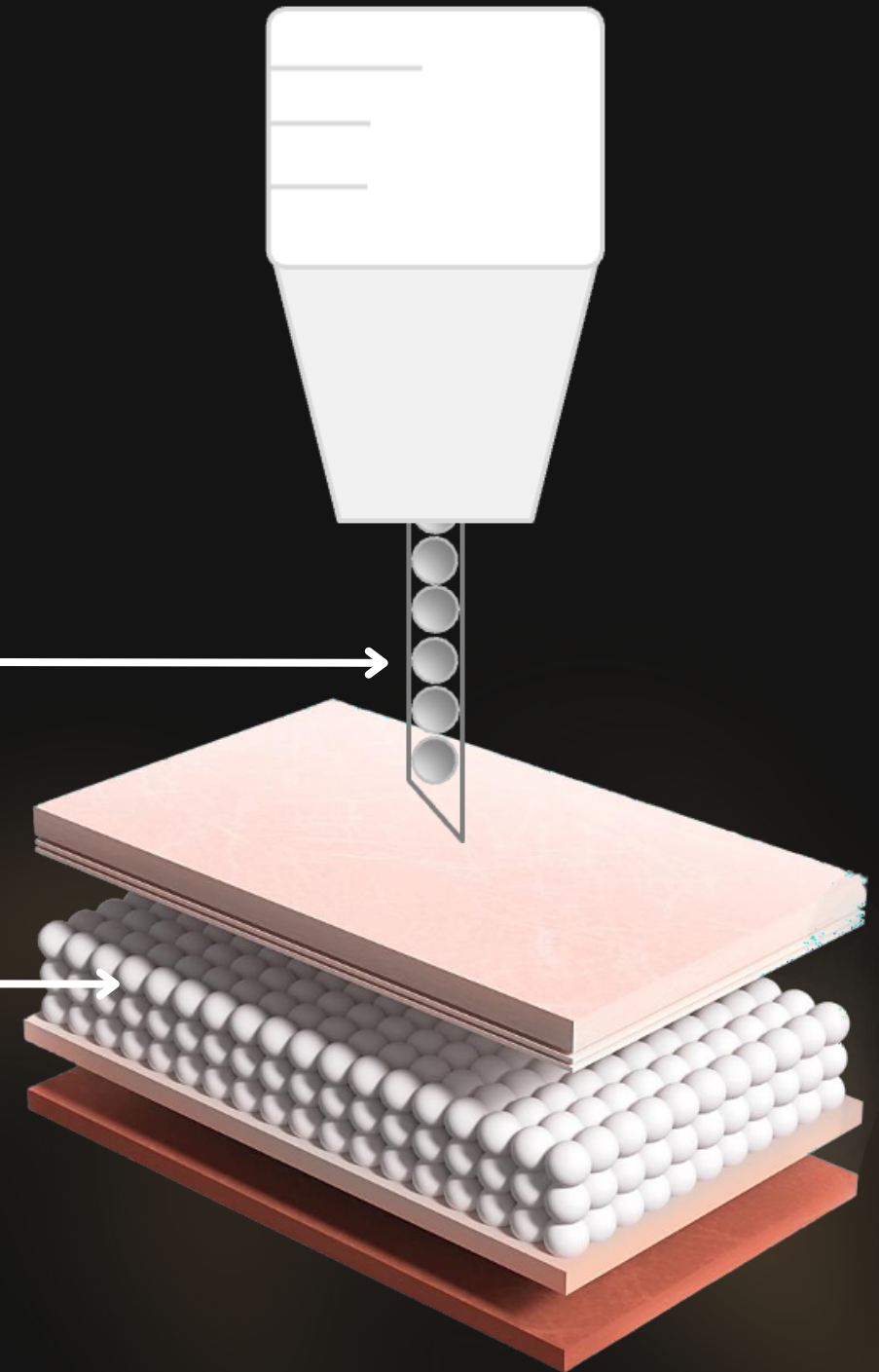
Product Name	ElastiFill
Material - Particle Shape	PLA Spherical
Freeze-drying Method	Bead
Particulation Method	CM Technology

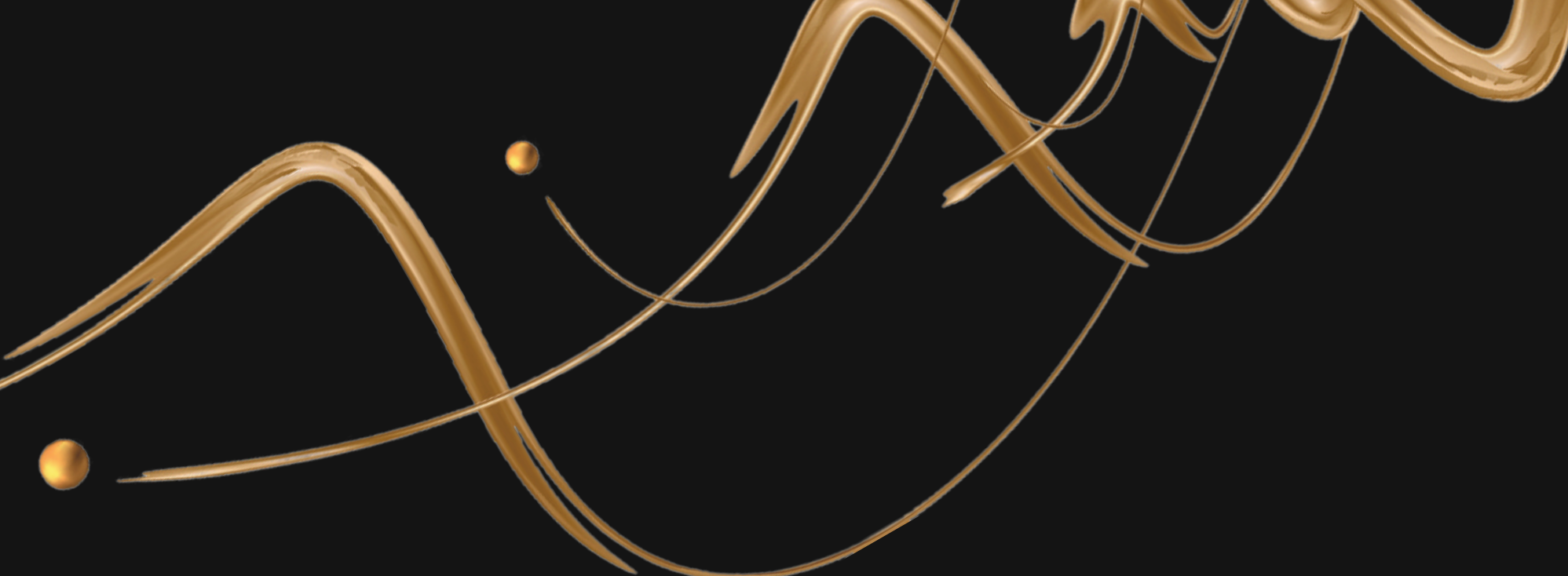
Homologous Microsphere Technology



Can be injected at low power without risk of blockage

The particle is spherical, creating a stable volume between the skin layers





ElastiFill

New Generation of Beauty

EMAIL

info@akradex.com

MOBILE

+82-10-8024-2302

ADDRESS

457, Toegye-ro, Jung-gu,
Seoul, South Korea

